

BRANDON AREA

VitalSigns.®

2019



bacf Brandon Area
Community Foundation
rooted in community



OUR COMMUNITIES

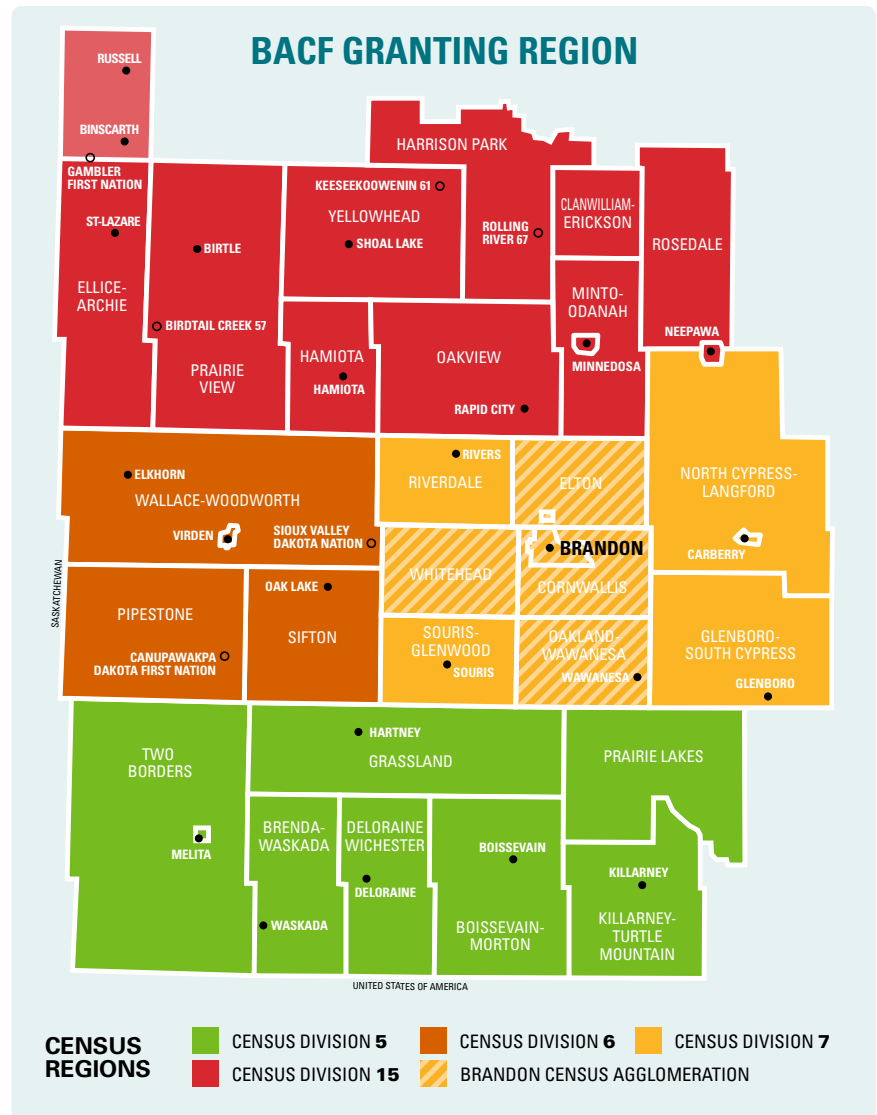
What is Vital Signs®?

OUR COMMUNITY SNAPSHOT

Preparing a Vital Signs report is an excellent way to begin to build our profile and role in our community.

In 2018, Brandon Area Community Foundation (BACF) Board of Directors made the decision to conduct our first Vital Signs® community assessment report to be launched in late 2019. This assessment, based on the principles of Community Foundations of Canada, measures a number of indicators of community needs and vitality in several areas.

The goal of our community check-up report is to identify the granting needs in Brandon and the area we serve. In developing this community resource, BACF will gain a better understanding of our granting regions. We want to understand our community's strengths and needs in order to work together and move forward. This Vital Signs® report will be used to help guide BACF's most important decisions, whether it's investing our grants in projects and charities that are on the front lines of community building or working with donors to develop funds that will make a difference, today and well into the future.



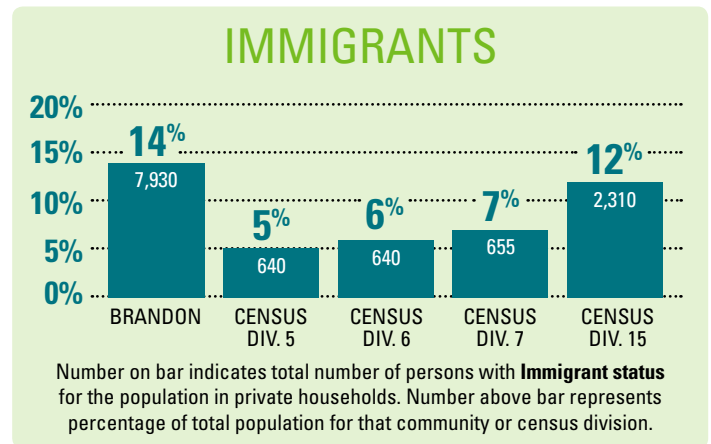
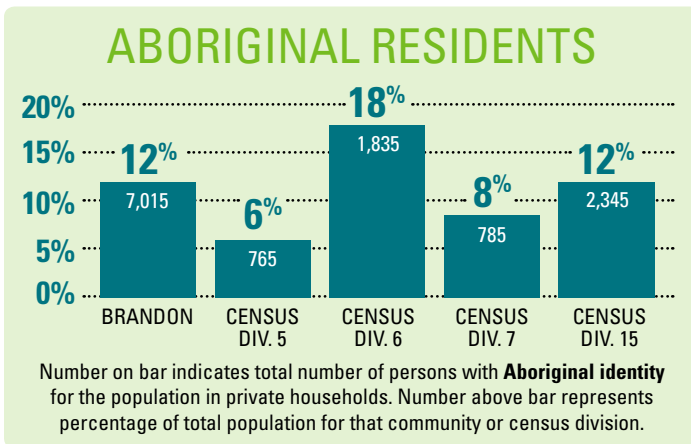
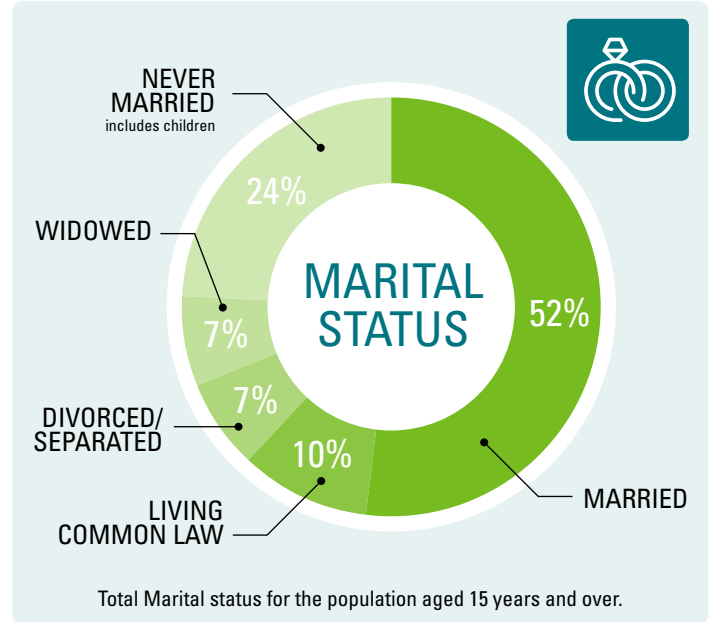
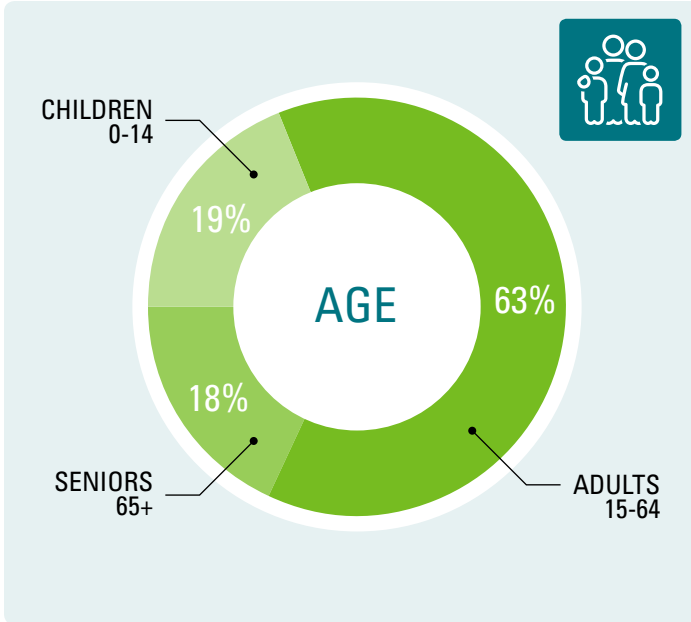
POPULATION

POPULATION

REGIONAL POPULATION 113,618

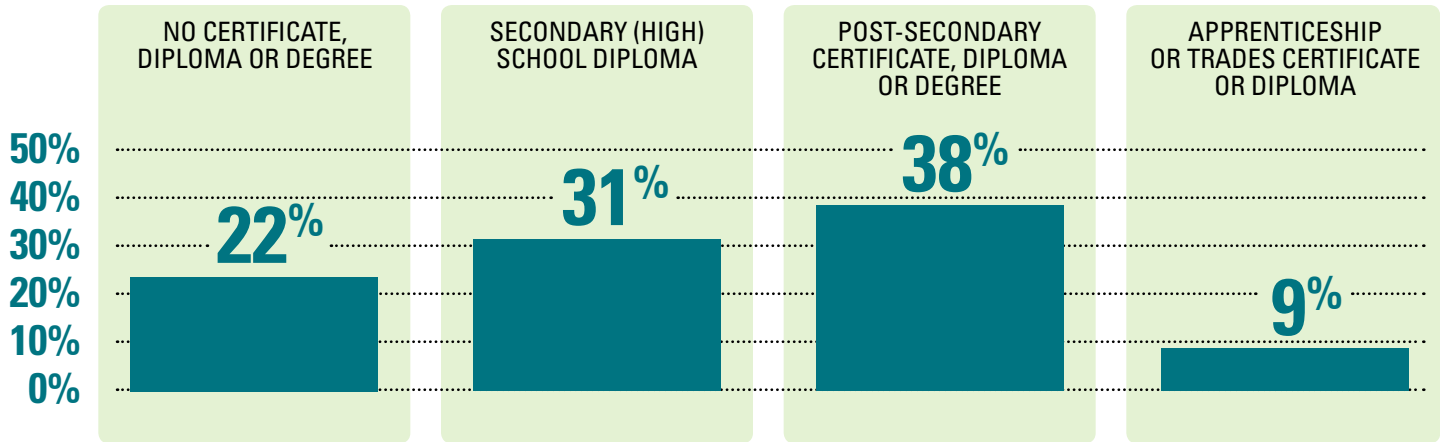
13,176 DIVISION 5 10,317 DIVISION 6 10,743 DIVISION 7 21,379 DIVISION 15 58,003 BRANDON

SOURCE: Census Profiles 2016



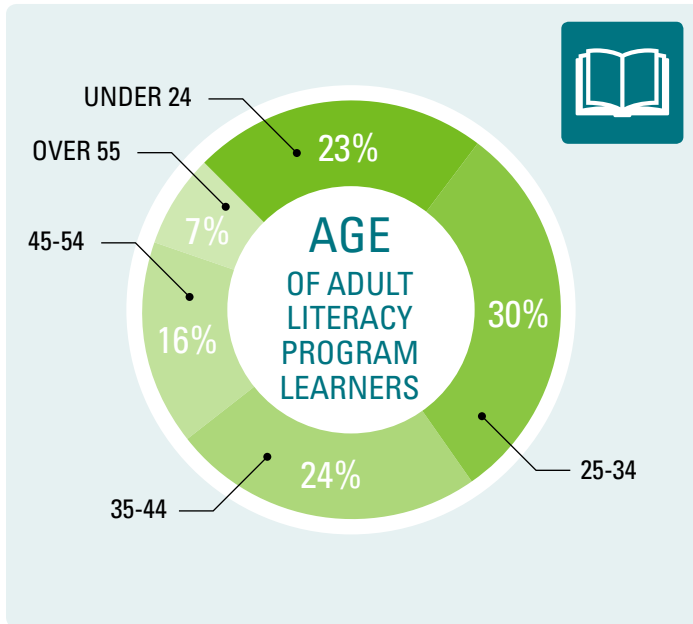
EDUCATION & LITERACY

LEVEL OF EDUCATION

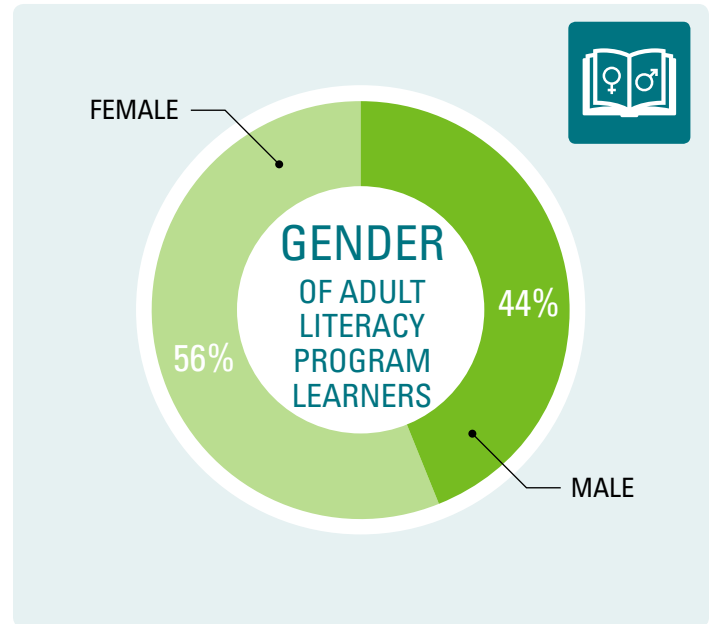


Highest certificate, diploma or degree for the population aged 15 years and older in private households.

SOURCE: Census Profiles 2016



SOURCE: Manitoba Adult Literacy Strategy / Adult Learning Centres in Manitoba - Annual Report 2016-2017



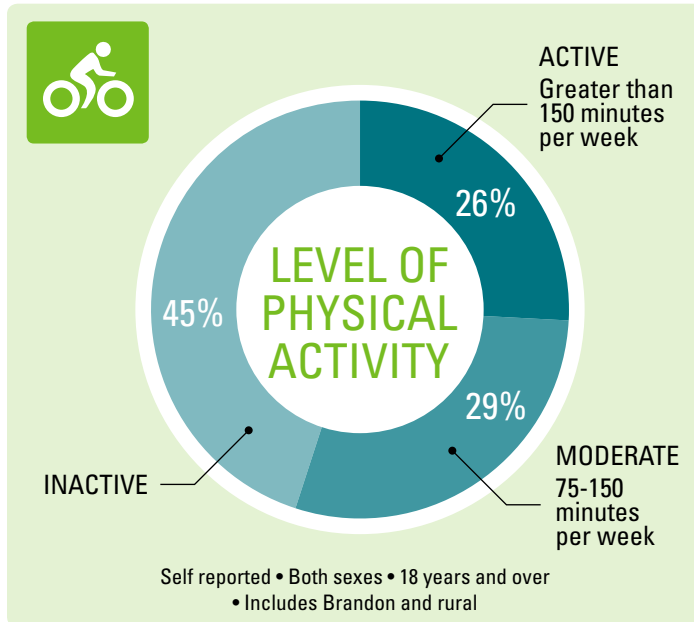
SOURCE: Manitoba Adult Literacy Strategy / Adult Learning Centres in Manitoba - Annual Report 2016-2017

PHYSICAL & MENTAL HEALTH

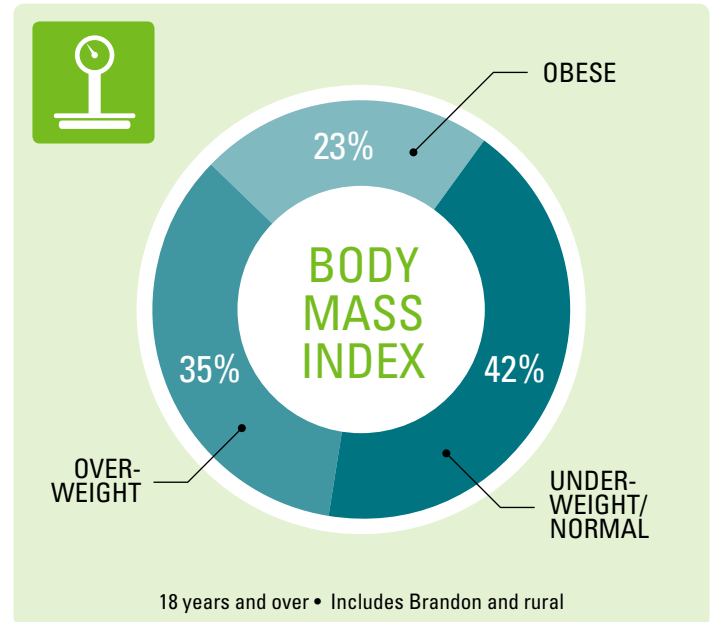
LIFE EXPECTANCY



SOURCE: Statistics Canada

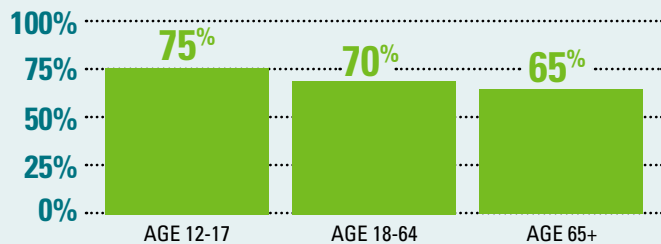


SOURCES: Manitoba Health, Health Information Management, 2014; Prairie Mountain Health: Community Health Assessment 2015



SOURCES: Manitoba Health, Health Information Management, 2014; Prairie Mountain Health: Community Health Assessment 2015

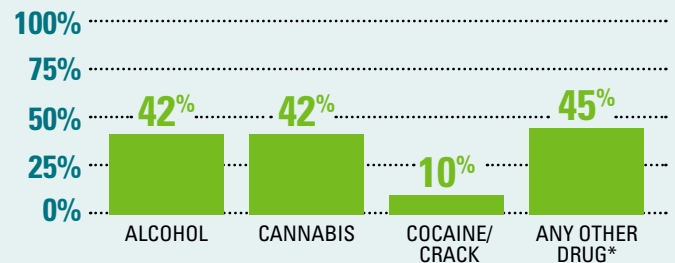
GENERAL MENTAL HEALTH



Percentage of Manitoba residents who perceived their mental health to be "Very Good or Excellent" • Both sexes

SOURCE: Statistics Canada

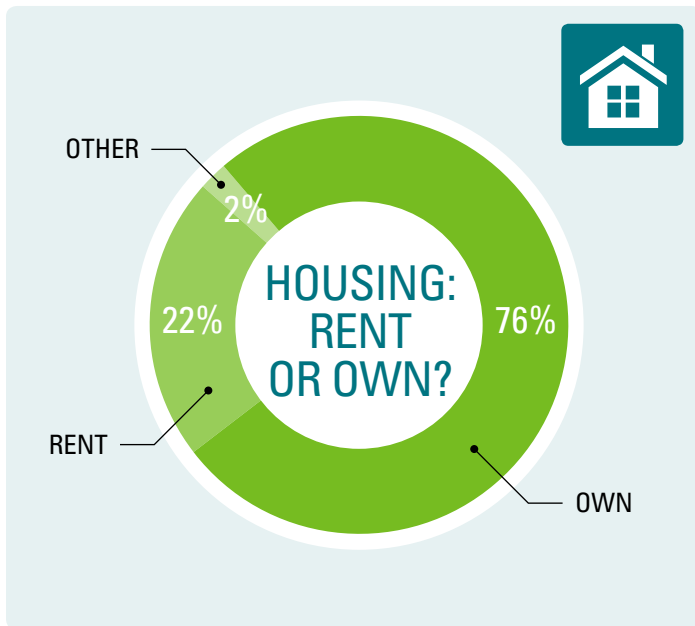
DRUG & ALCOHOL USE



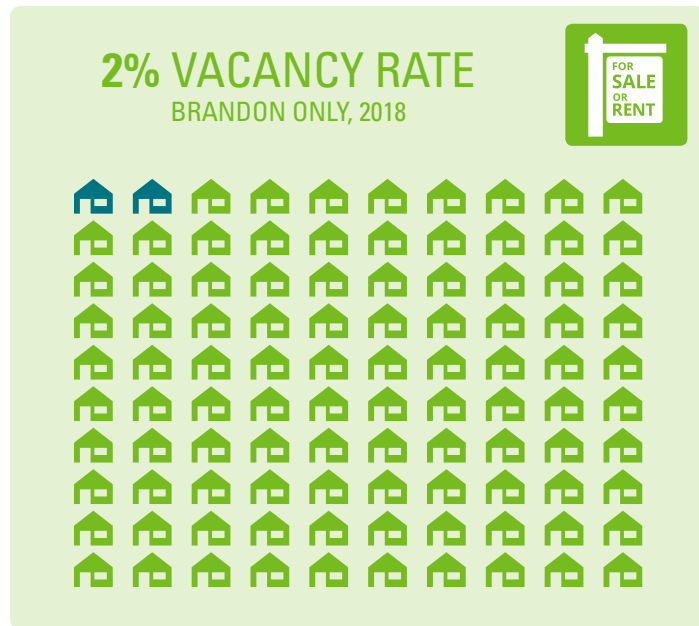
Drug use over lifetime for residents of Manitoba age 15+ • Both sexes
* Includes crystal meth

SOURCE: Canadian Tobacco, Alcohol and Drugs Survey, February - December 2017

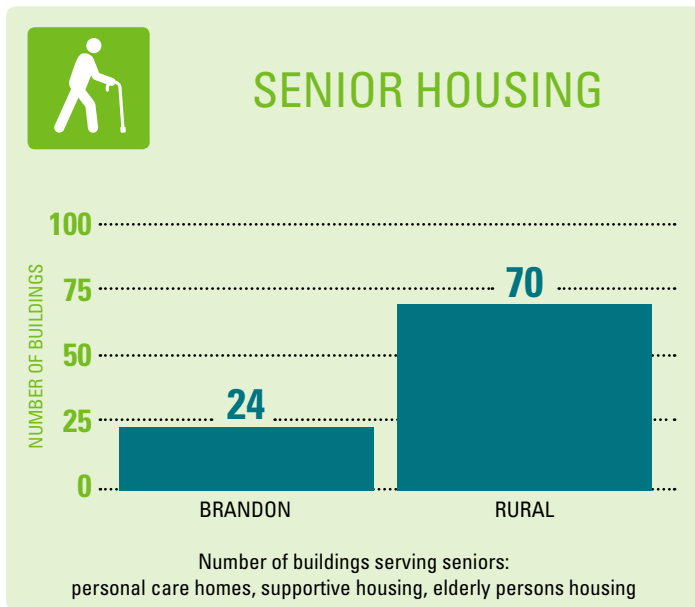
HOUSING & HOMELESSNESS



SOURCE: 2016 Canada Census



SOURCE: Economic Development Brandon



SOURCES: Compiled Date; Brandon Community Food Assessment, 2015



SOURCE: Brandon Neighbourhood Renewal Corporation, 2018

SPORTS & RECREATION

RECREATION FACILITIES

BRANDON



RURAL

SOURCE: Municipal and town websites; City of Brandon: Recreation Master Plan (2019)



ARTS & CULTURE



BRANDON
\$2,051,000

CENSUS DIVISION 7
(excluding Brandon)
\$49,000

CENSUS DIVISION 5
\$252,000

CENSUS DIVISION 6
\$250,000

CENSUS DIVISION 15
\$398,000

**MUNICIPAL
SPENDING ON
LIBRARIES,
MUSEUMS &
OTHER FACILITIES**

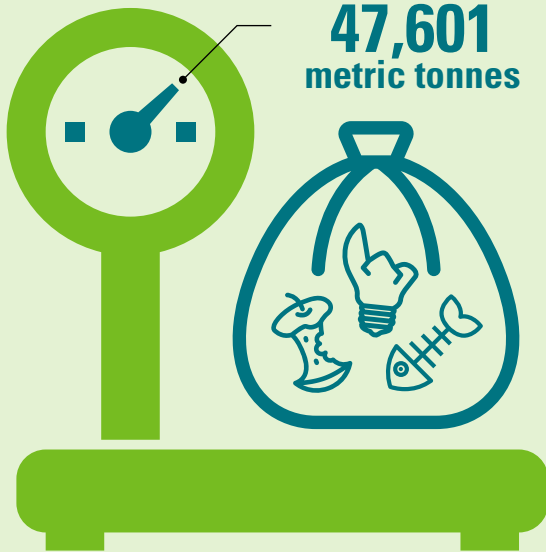
REGIONAL TOTAL
\$3,000,000



SOURCE: Arts and Culture from questionnaire; City of Brandon - 2019 Financial Plan

APPROXIMATE ANNUAL WEIGHT OF WASTE

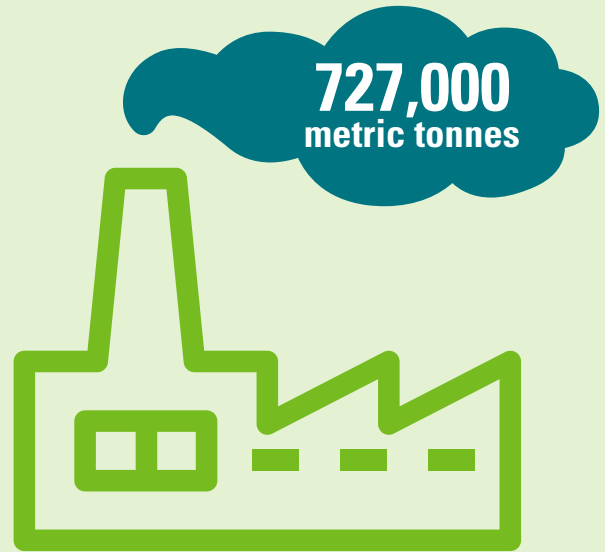
BRANDON, 2018/19



SOURCE: City of Brandon - 2018 Landfill Annual Report

INDUSTRIAL CARBON EMISSIONS

BRANDON, 2017



SOURCE: Government of Canada - Canadian Environmental Sustainability Indicators - Greenhouse Gas Emissions (2017)

RECYCLING

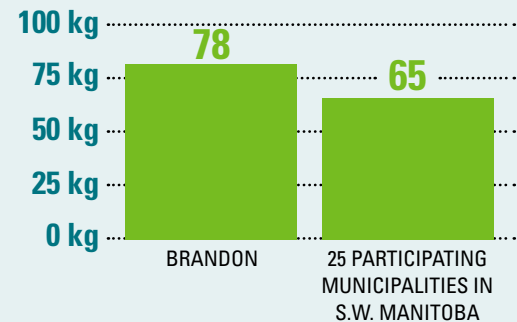


TOTAL TONNES OF
RECYCLING COLLECTED, 2018

BRANDON
3,812,510 KG

S.W. MANITOBA (EXCLUDING BRANDON)
2,285,527 KG

AVERAGE KILOGRAMS
RECYCLED PER CAPITA, 2018



SOURCE: 2018 MMSM-Multi-Material Stewardship MB Annual Report

INDIGENOUS PEOPLES

LIFE EXPECTANCY



SOURCE: Prairie Mtn. Health Community Assessment-Manitoba Centre for Health Policy. (2019). The health status of and access to healthcare by Registered First Nation Peoples in Manitoba.

POPULATION OF FIRST NATION COMMUNITIES

BACF granting region is located on Treaty 2 Territory, Home of the Métis Nation

GAMBLER
FIRST NATION



CANUPAWAKPA
DAKOTA FIRST NATION



KEESEKOOWENIN
OJIBWAY FIRST NATION



BIRDTAIL SIOUX
FIRST NATION



ROLLING RIVER
FIRST NATION



SIOUX VALLEY
DAKOTA NATION

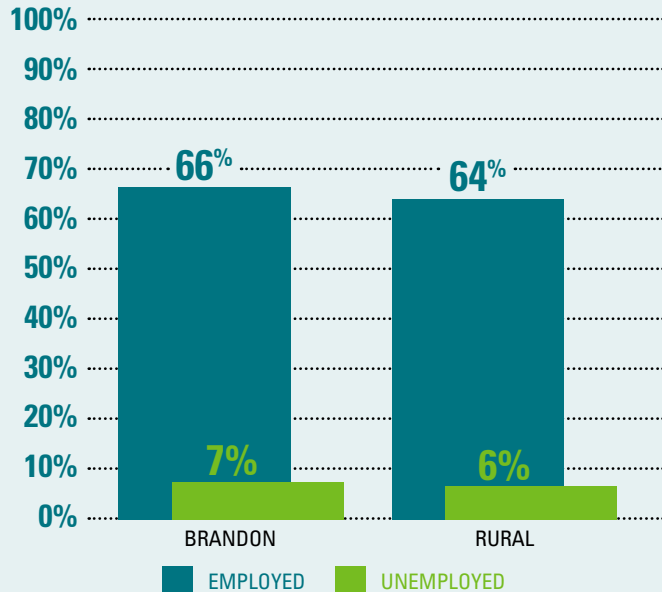


SOURCE: Aboriginal Population Profile, Census Canada, 2016



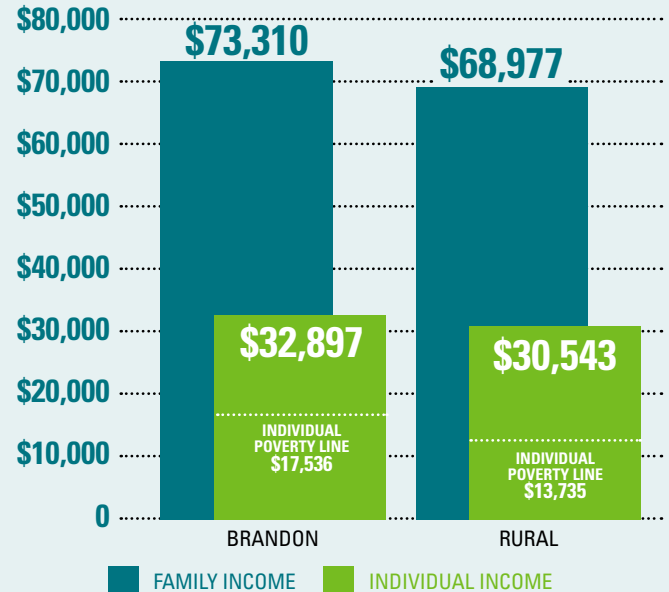
POVERTY

EMPLOYMENT & UNEMPLOYMENT RATES



SOURCE: Statistics Canada, 2016

MEDIAN ANNUAL INCOME AFTER TAX • INDIVIDUAL & FAMILY



SOURCE: Statistics Canada, 2016



COMMUNITY
FOOD BANKS

BRANDON	RURAL
6	14

SOURCE: Compiled Survey Response Data



ALLOCATED COMMUNITY
GARDEN PLOTS

BRANDON	RURAL
833	79

SOURCE: Compiled Survey Response Data



MEALS SERVED AT
SOUP KITCHENS IN 2018

BRANDON
41,956

SOURCE: Helping Hands Brandon, 2018



FOOD HAMPERS
DISTRIBUTED IN 2018

BRANDON
22,629

SOURCE: Samaritan House Brandon, 2018

BRANDON AREA

VitalSigns®

FUNDING PARTNERS

THE
THOMAS SILL
FOUNDATION
INC



RESEARCH & ACKNOWLEDGMENTS

Private Fundholder

Brandon University Faculty of Health Studies
Student Research Unit:

- Research Facilitator: Donna Epp
- Student Research Assistants:
Vanessa Neufeld, Joslin Mamuric, Riley Hammond

All participating Towns, Municipalities and
Art Galleries within BACF granting region

Addictions Foundation Manitoba

Brandon Community Food Assessment
Brandon Neighbourhood Renewal Corporation
City of Brandon
Economic Development Office Brandon
Helping Hands Soup Kitchen

Manitoba Adult Literacy Strategy/

Adult Learning Centres in Manitoba
Multi-Material Stewardship Manitoba
Prairie Mountain Health
Samaritan House Ministries Inc.
Tourism Westman
United Way of Brandon

2019 BACF BOARD OF DIRECTORS

The Brandon Area Community Foundation is comprised of a talented group from around Westman who share an optimistic view for our community:
Brian Cottom, Gail Cullen, Bev Cumming, Andrea Epp, Michelle Hood, Bob Patterson, Jaime Pugh-Clemmensen, Dan Robertson,
Terri Roulette McCartney, Hope Switzer. Ex-officio: Mayor Rick Chrest. BACF Executive Director: Laura Kempthorne. Administrative Assistant: Barb Brown.



Unit #2
2830A Victoria Avenue
Brandon, MB R7B 3X1

Phone 204-571-0529
Email laurak@bacf.ca



COMMUNITY
FOUNDATIONS
OF CANADA

Vital Signs is a community check-up conducted by community foundations across Canada that measures the vitality of our communities and identifies significant trends in a range of areas critical to quality of life. Vital Signs is coordinated nationally by Community Foundations of Canada. The Vital Signs trademark is used with permission from Community Foundations of Canada.